

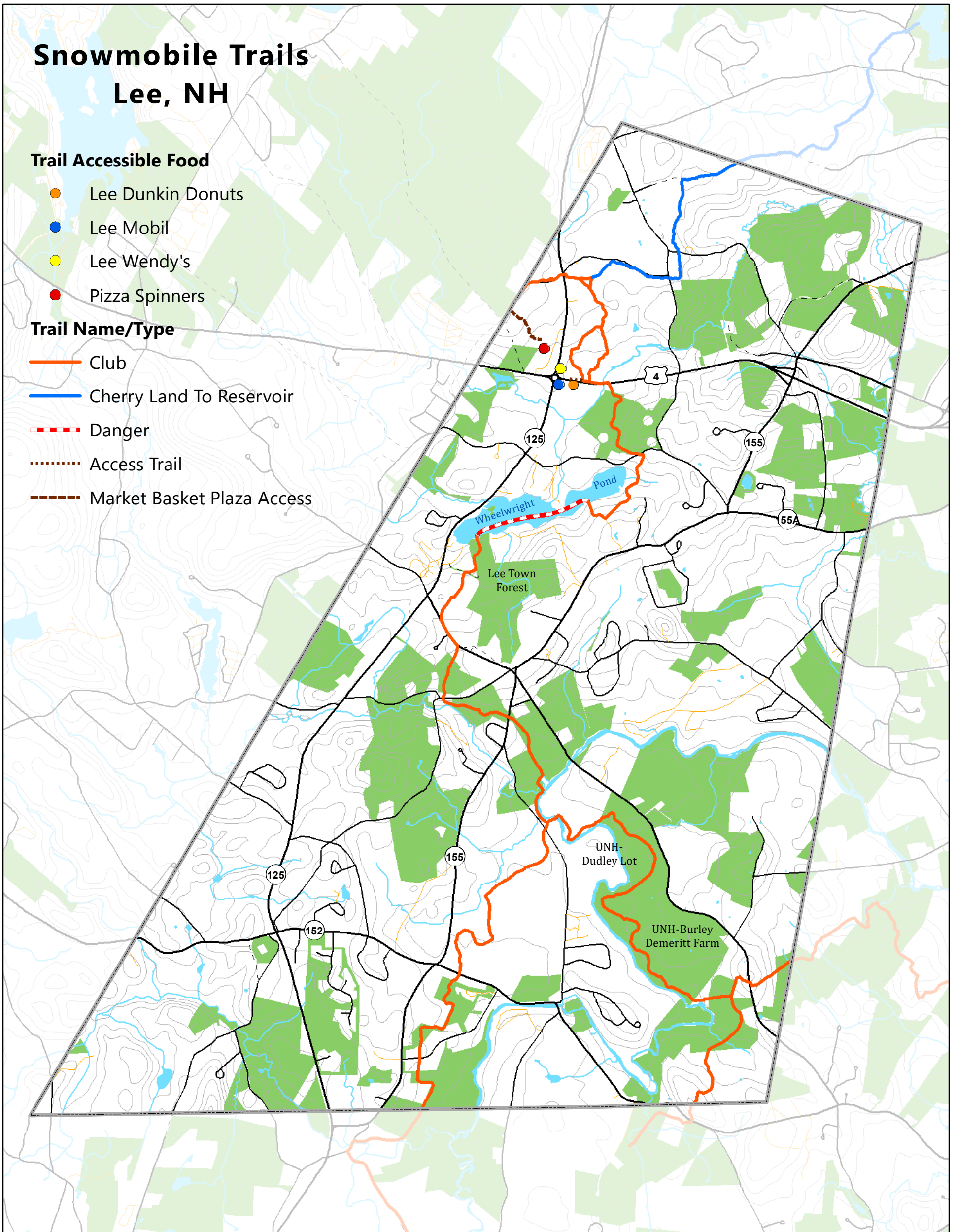
# Snowmobile Trails Lee, NH

## Trail Accessible Food

- Lee Dunkin Donuts
- Lee Mobil
- Lee Wendy's
- Pizza Spinners

## Trail Name/Type

- Club
- Cherry Land To Reservoir
- - - Danger
- - - - - Access Trail
- - - - - Market Basket Plaza Access



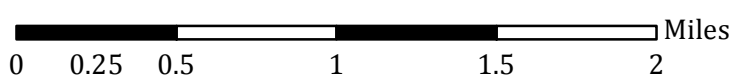
## Base Features

### Roads

- State
- Local
- Private
- Not Maintained
- Lee Town Boundary
- Lake, Pond
- Stream, River
- Conservation Land
- 20ft Contour



1:38,000



Prepared by the **Strafford Regional Planning Commission**  
150 Wakefield St. Suite 12 Rochester, NH 03867  
T: (603) 994-3500 E: srpc@strafford.org

Date: April 20, 2018 Author: RM  
Path: M:\Towns\Lee\MapRequests\snowmobile trails\  
SnowmobileTrails\_11x17.mxd

### Data Sources

Snowmobile trails data purchased from GPS Trailmasters.  
Base features from NH GRANIT database. Digital data in NH GRANIT represent the efforts of the contributing agencies to record information from the cited source materials. Earth Systems Research Center (ESRC), under contract to the Office of Energy and Planning (OEP), and in consultation with cooperating agencies, maintains a continuing program to identify and correct errors in these data. Neither OEP nor ESRC make any claim as to the validity or reliability or to any implied uses of these data. Digital tax parcels taken from SRPC database. Data should be used for planning purposes only. Data were derived from various sources and were updated at different timeframes, with varying levels of accuracy. Please notify SRPC of any errors or omissions.