

**TOWN OF LEE, NEW HAMPSHIRE**  
**249 Calef Highway**  
**Lee, New Hampshire 03861**  
**(603) 659-5414**

Lee News & Upcoming  
Events  
July 29, 2022



### **Join us for the Fisher Cats Game Night!**

The Lee Recreation Commission is hosting an evening at the Fisher Cats on Thursday, August 11<sup>th</sup>! The outing includes a round trip bus trip from Little River Park, (leaving at 5pm) baseline seating, hot dog, chips, drink (vegetarian options available). The game ends with a fireworks display. The cost for all of this is only \$5 per person! We have a limited number of seats, so please don't wait to reserve your spot. RSVP to Caren Rossi at [crossi@leenh.org](mailto:crossi@leenh.org) or call 603-659-6783 to sign up or have questions.



### **CICADA KILLER WASPS AT LITTLE RIVER PARK**

Eastern cicada killer wasps or sometimes-called sand hornets, even though they are not hornets, hunt cicadas and provision their nests with them. The eastern cicada-killer wasp may be the scariest-looking wasp in our state. However, it is *not* aggressive to people and is virtually harmless, unless handled roughly. It is an exceptionally large species, with rusty clear wings and the black and yellow markings common of wasps. In addition to their size and coloration, their behavior identifies them. Males typically defend territories by simply flying around the

nests of one or more females. The males' energetic hovering can be intimidating. Male cicada killers may clash with other insects, crashing into them bodily, but with people they usually just fly around and inspect us. Females also cruise around, looking for good places to dig tunnels and searching around trees and shrubs for cicadas. Males have a pointy projection on their abdomen tip that amounts to a false stinger, and they may poke it against their enemies in defense, but they are completely incapable of stinging. Females (unless molested) reserve their powerful sting for the cicadas they hunt.

# LEE FIREMAN'S ASSOCIATION



## ICE CREAM SMORGASBORD

Come support your local Fire Association!

**Kids \$3 and Adults \$5.**

Chocolate, Vanilla & Strawberry with all the fixings!

**Little River Park**

**Tuesday, August 16, 2022**

**6:00pm - 8:00pm**

**Come out and see  
Lee Fire & Rescue's  
New Engine 1**





**TOWN OF LEE  
SEEKING CAPITAL IMPROVEMENT PLAN COMMITTEE MEMBER!**

[CLICK HERE](#) for details

Call Assistant Town Administrator Denise Duval at 603-659-5414 x301 to apply NOW

---



**LET THE CHURCH BELL RING!**

The Lee Church Congregational is currently fundraising to assist in repairing the church bell. The bell rings to mark celebrations, deaths, calls to worship, and significant milestones but for a while now, the Lee Church bell has sadly been silent.

After decades of exposure, the Bell Tower floor has weathered and softened. This prevents the bell from being used. Once the floor is repaired and the bell is realigned then the bell can ring again. The cost for these repairs are estimated to be \$10,000. This is a lot for a small community church, so we are asking the community for help. You can support this project with a tax-deductible donation, via PayPal at <https://www.leechurch.org/lets-fix-the-bell> or you may send a check to the Lee Church (17 Mast Rd). *Please indicate that your donation is for the bell tower.* Thank you.

---



**NOTICE FROM THE TOWN OF LEE CEMETERY TRUSTEES**

Sadly, there has been a few instances of theft and possible criminal mischief reported at Lee Hill Cemetery. If you see anything unusual or suspect suspicious activity, please call 911 or contact the Lee Police at 603-659-5866.

---

## POTTER WASPS – NATURE’S EARTHENWARE ARTISANS

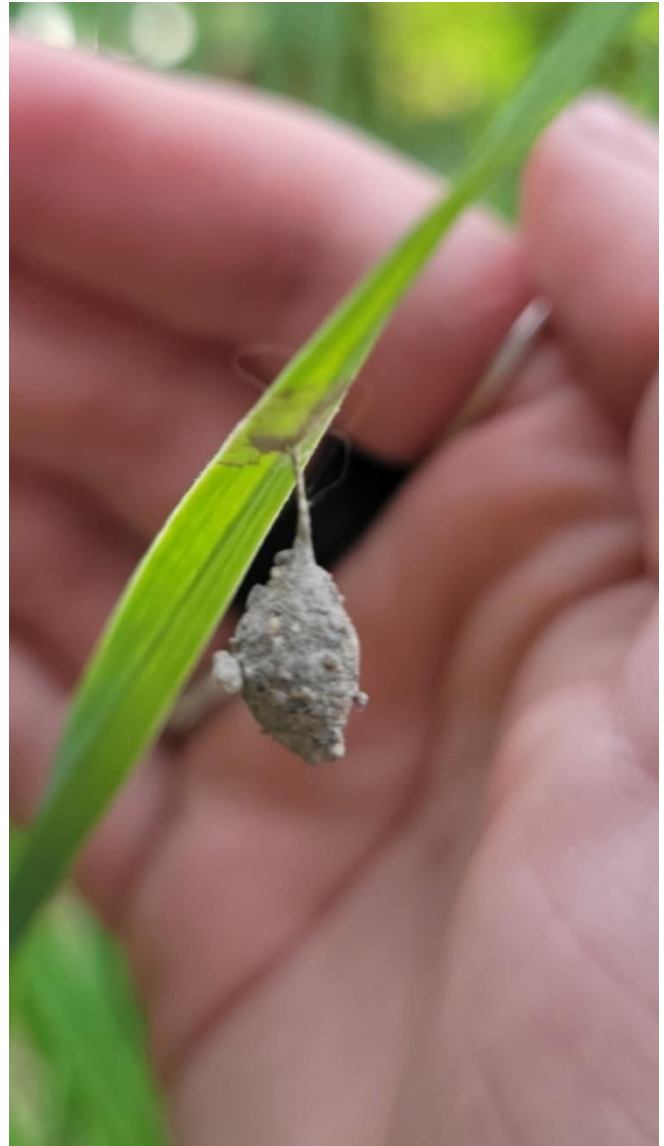
By Catherine Fisher, Conservation Commission

Photographs by Laura Thompson

A few weeks ago, I received a query from Laura Thompson, about an odd little mud formation she found hanging from the leaf of one of her garlic plants. Though it had been some years since I’d seen one, the molded clay structure was almost certainly a potter wasp nest, or brood cell, though I’d never seen one shaped quite like this - tapering at either end like a tiny amphora and dangling from a narrow, thread-like hanger. Those appliqué balls of clay adorning the sides of the nest were unusual as well - all of the potter wasp nests I’ve seen have been smooth little jugs with their tops attached directly to the support structure, usually a branch or attached to a railing.

There isn’t a lot of information available regarding potter wasps species. Numerous attempts to identify which potter wasp had built this brood cell came to no avail, save for this intriguing description in a University of Florida Entomology and Nematology publication, *Featured\_Creatures*: “...the nest of *Eumenes smithii* may be distinguished from that of *Eumenes fraternus* by the more granular and roughened surface due to small lumps of earth.”

Alas, searching for information about the potter wasp *Eumenes smithii*, proved equally fruitless, though bugguide.net does provide numerous photographs of the species: <https://bugguide.net/node/view/160404>

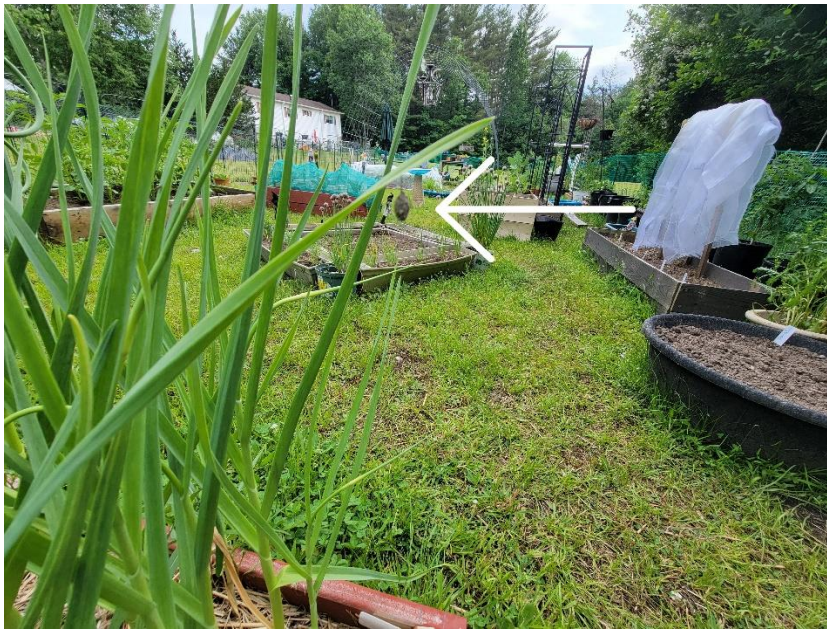


Potter wasps belong to the wasp superfamily Vespoidea, which includes social wasps such as yellow jackets and paper wasps, and solitary wasps such as pollen wasps, mason wasps, and potter wasps. Mason and potter wasps belong to their own subfamily, Eumeninae, with more than 250 species found in North America; with regards to how many of those 250 are specifically potter wasps, there is little information, though the same University of Florida publication mentioned above puts the number at 8 species and 10 subspecies. The subfamily name derives from *Eumenes*, the name for the Greek goddesses of vengeance, though its literal meaning is “gracious, kind.” This latter meaning better suits the gentle nature of potter wasps, which are placid, non-aggressive wasps. They have a stinger and will use it if provoked, but you really have to work at it. That venom is costly to produce, and as we shall see, plays a vital role in producing the next generation of potter wasps, so female potter wasps don't want to waste this precious commodity on something they can't use - like a human.

Potter wasps take flight in summer, each wasp emerging after overwintering as a pupa in its own brood cell. Adult wasps feed on nectar and are excellent pollinators. Male potter wasps resemble



females, but, as is the case in all members of the order Hymenoptera, lack a stinger. Evidence suggests that males use pheromones to locate females. After mating, the female begins to build the first in a series of brood cells, each one the home of a single egg. To do this, she collects water, then mixes it with dry dirt, which she shapes into a round pellet and carries off to the site she has chosen for her nest. Hair or plant fibers are often added to the mix, creating a strong, adobe-like substance that will withstand the vicissitudes of wind and rain. She forms her pot by joining the clay balls into strips, using her legs and mandibles to smooth and shape them. As she molds it, she adds saliva to the clay, which keeps it pliable and acts as a glue that holds the structure together as it dries. She stacks each strip of clay, one beneath the other, to form a type of coil pot. Over the course of several hours and hundreds of trips back and forth to gather raw materials, her beautiful, tiny pot is formed. The sun is the potter wasp's kiln, baking her clay mixture into a hard and impervious structure. When her pottery nest is finished, she inserts her abdomen through the entrance at the bottom of the nest and lays a single egg, suspended by a thin thread from the pot's upper surface.



The larva that will hatch from that egg will need sustenance, so the next order of business for the female potter wasp is to hunt for provisions, namely caterpillars. Once she's found a suitably sized caterpillar, she stings it, injecting it with a bit of her venom, thus paralyzing it. She then carries the still-living but immobilized caterpillar back to her brood cell, where it will stay fresh for when the larva hatches from its egg. One to a dozen caterpillars will be stashed in each brood cell, and when she

feels that her egg is adequately provisioned, she makes several more flights to gather more building materials and forms a bit more clay with which to seal the nest. Depending upon the species, the female may produce several more brood cells before her life ends.

Inside the brood cell, the larva hatches and begins feasting on the caterpillar(s) provided by its mother. It eats the outer bits first, saving the vital organs for last, which keeps the caterpillar alive and fresh until the larva finishes consuming it. The potter wasp larva develops inside the nest, growing and shedding its skin until it is ready to pupate. In our part of the planet, the young wasp overwinters as a pupa, snug inside its pot. The following summer, it emerges from its pupa as a fully formed adult, breaks open the clay pot that has been its home for the better part of a year, and flies off to begin life as a potter wasp.

Besides being wonderful pollinators, potter wasps, and other solitary wasps, are great allies to have in the garden, as they're fond of cabbage white caterpillars and other larvae that like munching on leafy vegetable plants. Though some species resemble yellow jackets, don't assume when you see a wasp that you're seeing a dangerous insect. All wasps are beneficial, and the majority of them are also non-aggressive. When you see a wasp or evidence of one, take a moment to observe, as Laura did, and appreciate your good fortune in being able to share a habitat with such fascinating and diverse forms of insect life.



## Battery Fire at the Lee Transfer Station

By Dean Rubine, LSC

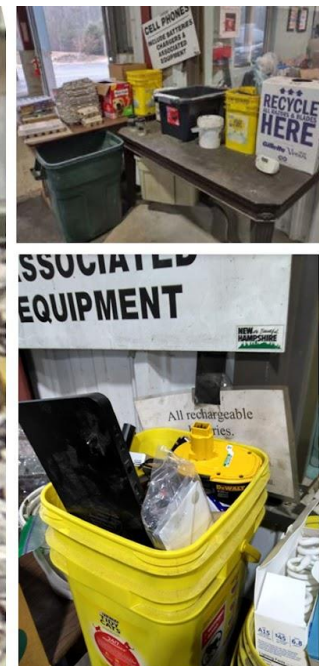
On May 31, 2022, there was a fire in the MSW (landfill trash) bin in the Lee Transfer Station. The cause was a rechargeable lithium laptop battery improperly disposed of in the regular trash. Fortunately, our trained Transfer Station staff noticed it was smoldering and acted quickly, removing the by-then burning object from the trash with a Bobcat and extinguishing the fire.

Lithium batteries contain extremely flammable electrolytes. Overcharging, damaging, puncturing, shorting or just overheating during use can lead to thermal runaway. That's when the battery gets hotter and hotter faster than the heat can be dissipated, eventually bursting into flames and igniting adjacent cells.

This is one reason why lithium batteries are classified as hazardous waste, and must be disposed of properly. In Lee, rechargeable and lithium batteries must be discarded in the small yellow bin outside the office on the left, where you enter the transfer station. The safest way is to make sure the batteries are fully discharged before disposal, and the terminals are taped over to avoid accidental shorting in the bin. This goes for all batteries that are rechargeable or contain lithium.

There's generally not the same fire risk associated with non-lithium, non-rechargeable alkaline and heavy-duty batteries. In Lee, these should be discarded in the regular (MSW) trash.

The Lee Transfer Station has many bins for many different kinds of waste, and we rely on the residents to sort correctly. The LSC's own Jen Messeder has written the comprehensive [One Bin At a Time](#) guide, which tells you all you need to know.



Left: Lithium battery Fire in the Municipal Solid Waste bin on May 31, 2022.

Right: The proper bin for disposing of lithium and rechargeable batteries

## LEE FIRE DEPARTMENT TIMELY TOPICS - JULY 2022

The kids are out of school and summer is swinging into action, we would like to pass on a few safety tips for a safe summertime:

1. **Grill safety:** You should keep your grill clean and free from grease build up to prevent a grill fire. Grills should be used at least ten (10) feet away from any structure. Grills are not allowed to be used on balconies, decks or patios of any multifamily apartment buildings per State Fire Code.
2. **Outdoor fires:** Burn permits are required for all outdoor open flame burning (except for propane fueled appliances and charcoal grills). Burn permits may be purchased online at the [Division of Forests and Lands](#) or obtained at the Fire Department. Please read and follow all State of NH outdoor burning regulations.
3. **Swimming and boating:** Please follow State of NH boating regulations while boating. Wear life jackets while boating and use caution while swimming as the water temperatures may still be cold.
4. **Fireworks:** Class C fireworks are permissible per town ordinance and State of NH Regulations. There is no permit required to purchase, possess or use Class C fireworks in the Town of Lee. Class B fireworks require a permit for use in the Town of Lee and must follow all State of NH guidelines. [CLICK HERE](#) State of NH Fire Marshal's Fireworks Safety Brochure. Please take the time to read before using any fireworks.

We hope everyone has a safe and happy summer!

---

### SELECT BOARD MEETINGS

July 25<sup>th</sup> Select Board Meetings 6:00pm  
Public Safety Complex, 20 George Bennett Road  
Subject to change, please check the website meeting calendar

Meetings can be seen on  at [CLICK HERE](#)

---

### NEW LEE TOWN OFFICES HOURS

Town Administrator's Office

**Monday 8am – 6pm**

**Tuesday, Wednesday, Thursday 8am – 4:30pm**

**Friday 8am – 12:30pm**

Town Clerk's Office

**Monday 8am – 6pm / Wednesday 8am – 4pm / Friday 8am – 4pm**

---

### LEE TOWN BOARD, COMMITTEE AND COMMISSION VACANCIES

See below for current openings! If you are interested, contact the Assistant Town Administrator Denise Duval at 603-659-5414 x301 or email [dduval@leenh.org](mailto:dduval@leenh.org). [CLICK HERE](#) for Application.

**The NEW CIP Committee**

Planning and Zoning Boards

Recreation Commission, Energy Committee, Fair Committee and Sustainability Committee



## E-CRIER PUBLISHING ANNOUNCEMENT

If you have a community event that you would like to publish in the E-Crier, please email Assistant Town Administrator Denise Duval at [dduval@leenh.org](mailto:dduval@leenh.org) by noon on Thursday to get published in that Friday edition.

---

## SWAP SHOP NEWS

**Hours:** The Swap Shop is open on Tuesdays, Thursdays and Saturdays 8:00 am – 5:00 pm.

The Swap Shop is open, if the garage door is open. **Please do not drop off anything if the Swap Shop garage door is closed.** The Swap Shop will close due to high winds, rain or if a volunteer is not available.

**Bulky Items:** The Swap Shop accepts large items.

*We look forward to greeting our visitors at the Swap Shop. Seeing the free exchange of items between the folks in town brings a lot of satisfaction to the volunteers at the Swap Shop. If you would like to join in and volunteer, please let us know. Contact Forms are available at the Swap Shop or email us at [swapshopleenh@gmail.com](mailto:swapshopleenh@gmail.com). You must be a residence of Lee and at least 18 years of age. Thank you!*

---

## DON'T FORGET, LEE DOES FOOD WASTE COMPOSTING!

### BE PART OF THE PROGRESS AND HELP THE TOWN SAVE MONEY ON MSW!

Interested residents should e-mail the Public Works Director Steve Bullek at [sbullek@leenh.org](mailto:sbullek@leenh.org), call him at 603-659-6515 or sign up at the Transfer Station. The Town provides special compostable bags to bring your food waste in to the Transfer Station.

---

## COMMITTEE, COMMISSION & BOARD [MEETING CALENDAR](#) [NEW LIBRARY WEBSITE](#)

---

## RECENT COVID-RELATED INFORMATION

### [NH COVID-19 WEBSITE](#)

NH Department of Health and Human Services

[CLICK HERE](#) for New DHHS Website!

---

## WILKINSON FOOD PANTRY - Lee Church Congregational, 17 Mast Rd

The food pantry is open to any household in Lee, Durham, Madbury, Newmarket, and Nottingham. Delivery is through a walk-up window service to minimize contact during this time. The pantry is open the 1<sup>st</sup> & 3<sup>rd</sup> Monday of each month from **5:30pm - 7:00pm**. If you have an emergency need for food outside of the normal hours, please call the Church office at 659-2861 or email at [leechurchucc@comcast.net](mailto:leechurchucc@comcast.net). All visits to the pantry are strictly confidential.

---



## READY RIDES

Ready Rides provides transportation at no charge for the elderly & disabled residents living in: **Barrington, Durham, Lee, Madury, Newfields, Newmarket, Northwood, Nottingham and Strafford** NH. Rides are provided by volunteer drivers using their own vehicles. **Accessible rides available.** To request information about registering as a rider or becoming a volunteer driver, please email [info@readyrides.org](mailto:info@readyrides.org) or call (603) 244-8719. You can find an [Application](#) for riders and a [Volunteer Application](#) on this website. Email or mail it to Ready Rides P.O. Box 272 Northwood, NH 03261. For other transportation options available in the region, please visit ACT's [Community Transportation Directory](#).

---

**WHEN SECONDS COUNT... Please take the time NOW to SAVE TIME in an EMERGENCY.**



Can the Police, Fire, or Ambulance find your home when you need them for assistance with an emergency? Can they find it at night? Can they find it during a snowstorm?

Having your name and number on a mailbox is just not enough. The Lee Firemen's Association, in a joint effort with the Lee Fire Department, has a program to install reflective house number signs at driveway entrances to assist all emergency responders in locating your home in a time of need. The cost for each sign with a post is \$50.00 and it will be installed by the Lee Firemen's Association. [CLICK HERE for Reflective House Number Sign Request Form](#)

## Lee Public Library

### LIBRARY HOURS

Monday – Wednesday 11:00 am – 7:00 pm

Thursday & Friday 10:00 am – 5:00 pm

Saturday 9:00 am – 12:00 pm

### AUGUST AT YOUR LEE LIBRARY!

**Community Art Show:** Last chance to stop by the library to look at all of the amazing works of art produced by our very own Lee residents. These pieces will be displayed until the end of August for our community to enjoy. Thank you all that have participated. Please come and collect your artwork.



**Tuesday August 2 & 8, 10:00am – 5:00pm – Grab & Go Craft Kit Pick-Up:** Come on over and pick up a kids craft kit!

**Tuesday August 2, 5:30pm – 6:30pm** – Friends Meeting, New members always welcome, come on over!

**Wednesday August 3 & 17, 10:00am - Knitters:** Meet on the first and third Wednesday at 10:00am. Bring along your knitting and enjoy some friendly company! New knitters always welcome.

**Wednesday August 3, 10 & 17, 3:00pm – 5:00pm – Kid's Summer Movies:** Join us for some fun kid's movies, popcorn and drinks. Bring your own blanky or bean bag!



**Friday August 5, 1:00pm - 2:30pm – Ice-Cream Social & Games:** Let's celebrate the end of the Summer Reading Program with some ice-cream fun and games! Come and play corn hole, four in a row, Tumble Tower, or Ring Toss. All ages welcome, no sign up necessary.



**Saturday August 6, 1:00pm – Lobster Fun with UNH at Little River Park:** Join us with UNH as we learn all about lobsters!



**Monday August 8, 5:00pm – 7:00pm – Open Adult Game Time:** Join us for indoor or outdoor games, corn hole, cards, ladder ball, chess, or bring a game of your choosing! No sign up necessary, just come on over!

**Tuesday August 9, 2:00pm – 4:00pm – Movie Time!** Let's celebrate **National Book Lovers Day** with an afternoon classic... We'll be showing *Pride & Prejudice* (2005)!



**Wednesday August 10, 5:30pm – 6:30pm** – Library Trustee Meeting.



**Thursday August 11, 2:00pm – 4:00pm Adult Shell Painting:** We'll be creating some masterpieces on shells! No sign up necessary, just come along and start painting!

**Friday August 12 & 26, 10:30am – 12:00pm – Free Space Friday:** Join us in the children's program space to play, create and have fun with Miss Judy! No sign up necessary, just come along!

**Thursday August 18, 10:00am – 5:00pm – HAPPY BAD POETRY DAY!** Write a poem, bring it in and read it to a member of staff and we'll give you a piece of candy!



**Monday August 22, 6:00pm – 7:00pm – Crafty Creations, Virtual or In-Person Crafting for Adults:** Join us on the Fourth Monday of every month (via zoom or in person) as we create wonderful decorations for your home or garden. Pick up your supply program kit from the library and tune in to zoom or come in to the library and create in person! Please call or email to sign up.

**Wednesday August 24, 6:00pm – 7:30pm – Backyard Farming Initiative:** This month we will visit Ruth Sample's garden. With over 30 years of composting experience, Ruth will be talking about her effective composting system, and how she grows successfully with minimum spraying, and protects her garden with mesh barriers. Call or email Lee Public Library for program location, further details, and to sign up!



**Tuesday August 30, 10:00am – 5:00pm – HAPPY NATIONAL MARSHMALLOW TOASTING DAY!** Come on over to the library and pick up your s'mores kit today... only while supplies last! Have a s'more on us 😊

**Wednesday August 31, 6:00 – 8:00pm – Family Movie Night:** Join us for our summer family movie night! This month we will watch 'Dr. Strange in the Multiverse of Madness' (2022). This is a PG 13 rated movie, so please be advised to bring children who are approved to watch this title.



**Regular children's story times and after school programs will resume in the fall!**



## Regional & State News & Events

### GOVERNOR & EXECUTIVE COUNCIL MEETING

Tuesday, July 12, 2022

[CLICK HERE](#) for the 7/12/2022 Minutes

Next Governor & Executive Council Meeting

**Wednesday, July 27, 2022 10:00 am in Henniker, NH**

---



[CLICK HERE](#) for the Summer Lamprey River Wild & Scenic Newsletter

---

### BEWARE OF SMISHING CAMPAIGN

Please [CLICK HERE](#) for the New Hampshire Information & Analysis Center (NHIAC) bulletin regarding a COVID-19 themed smishing campaign being distributed to NH citizens. Smishing is the fraudulent practice of sending text messages purporting to be from a reputable company in order to induce individuals to reveal personal information. If you receive a text message like this one, please delete it immediately. If you click on the link, you will be redirected to a fraudulent website that collects personal information.

---

### If you are a Lee Resident in need of assistance with a Veteran's issue the Lee Memorial VFW Post 10676 may be able to help.

This post serves the communities of Lee, Durham, Madbury and Newmarket and has Service Officers who can help folks with just about any Veteran's related issue. At the State level they have a seat on the SVAC (State Veterans Advisory Committee) and are linked with tens of other non-profit Veterans organizations that provide a host of services. Please contact **Scott Moreau**, Commander, VFW Post 10676, at [vfwpost10676@yahoo.com](mailto:vfwpost10676@yahoo.com) for assistance.

---

### The Seacoast Village Project (a nonprofit)

*Helping seniors age in their homes and community!*

Educational Programs, Social Activities, Home Services, Resources, Friendships

Membership Information

<https://www.seacoastvillageproject.org/>

(603)-373-8429

---

### ATTENTION!

To receive the E-CRIER via email every week go to [www.leenh.org](http://www.leenh.org), click on the **Subscribe** button under the Town Resource Center section & follow the directions to subscribe.

If you do not have the internet please come to the Town Offices for a **printed copy** or go to the Library to view it there. If you cannot leave your home please call the Assistant Town Administrator Denise Duval at 659-5414 x301 to have it mailed!