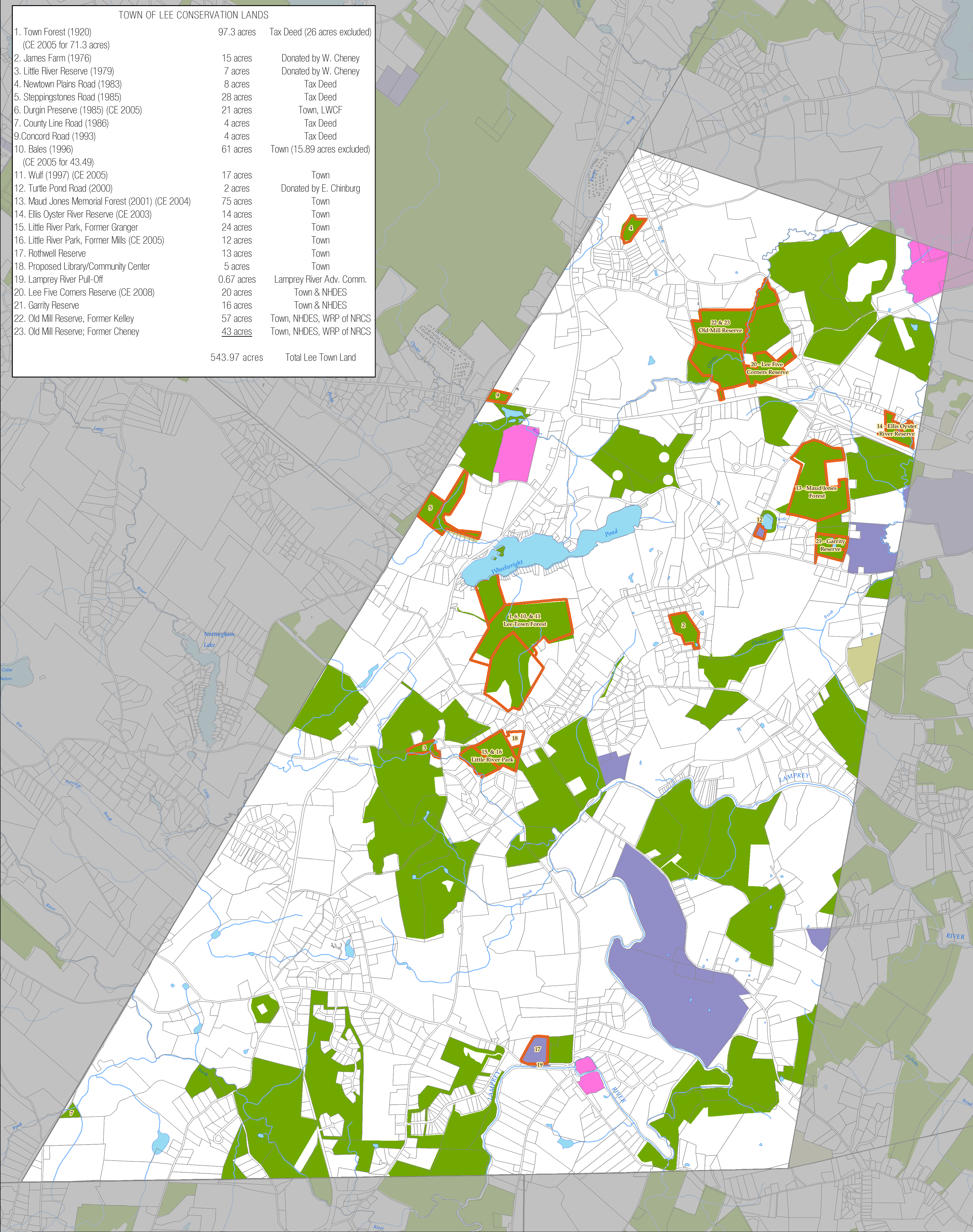


TOWN OF LEE CONSERVATION LANDS		
1. Town Forest (1920) (CE 2005 for 71.3 acres)	97.3 acres	Tax Deed (26 acres excluded)
2. James Farm (1976)	15 acres	Donated by W. Cheney
3. Little River Reserve (1979)	7 acres	Donated by W. Cheney
4. Newtown Plains Road (1983)	8 acres	Tax Deed
5. Steppingstones Road (1985)	28 acres	Tax Deed
6. Durgin Preserve (1985) (CE 2005)	21 acres	Town, LWCF
7. County Line Road (1986)	4 acres	Tax Deed
9. Concord Road (1993)	4 acres	Tax Deed
10. Bales (1996) (CE 2005 for 43.49)	61 acres	Town (15.89 acres excluded)
11. Wulf (1997) (CE 2005)	17 acres	Town
12. Turtle Pond Road (2000)	2 acres	Donated by E. Chinburg
13. Maud Jones Memorial Forest (2001) (CE 2004)	75 acres	Town
14. Ellis Oyster River Reserve (CE 2003)	14 acres	Town
15. Little River Park, Former Granger	24 acres	Town
16. Little River Park, Former Mills (CE 2005)	12 acres	Town
17. Rothwell Reserve	13 acres	Town
18. Proposed Library/Community Center	5 acres	Town
19. Lamprey River Pull-Off	0.67 acres	Lamprey River Adv. Comm.
20. Lee Five Corners Reserve (CE 2008)	20 acres	Town & NHDES
21. Garrity Reserve	16 acres	Town & NHDES
22. Old Mill Reserve, Former Kelley	57 acres	Town, NHDES, WRP of NRCS
23. Old Mill Reserve; Former Cheney	<u>43 acres</u>	Town, NHDES, WRP of NRCS
	543.97 acres	Total Lee Town Land



Conservation Lands
Lee, New Hampshire

N

1:16,000

00.5123Miles

Data Sources

Base features from NH GRANIT database. Digital data in NH GRANIT represent the efforts of the contributing agencies to record information from the cited source materials. Earth Systems Research Center (ESRC), under contract to the Office of Energy and Planning (OEP), and in consultation with cooperating agencies, maintains a continuing program to identify and correct errors in these data. Neither OEP nor ESRC make any claim as to the validity or reliability or to any implied uses of these data.

Digital tax parcels taken from SRPC database. Data should be used for planning purposes only. Data were derived from various sources and were updated at different timeframes, with varying levels of accuracy. Street names are maintained internally by SRPC staff. Please notify SRPC of any missing or inaccurate street names."

Legend

Town-owned Parcels

2016 SRPC Conservation Update

Permanent Conservation Land

Developed Public Land

Pending

NH GRANIT [6/16]

Protection Level

Permanent Conservation Land

Unofficial Conservation Land

Unprotected Water Supply Land

Developed Public Land

NOTES

Please note that, due to differences in date and methodology of data development, some features depicted here, most notably the tax parcel boundaries, do not necessarily register perfectly with other features.

THIS MAP IS FOR PLANNING PURPOSES ONLY. IT IS NOT INTENDED TO REPRESENT LEGAL DESCRIPTION OR CONVEYANCE.

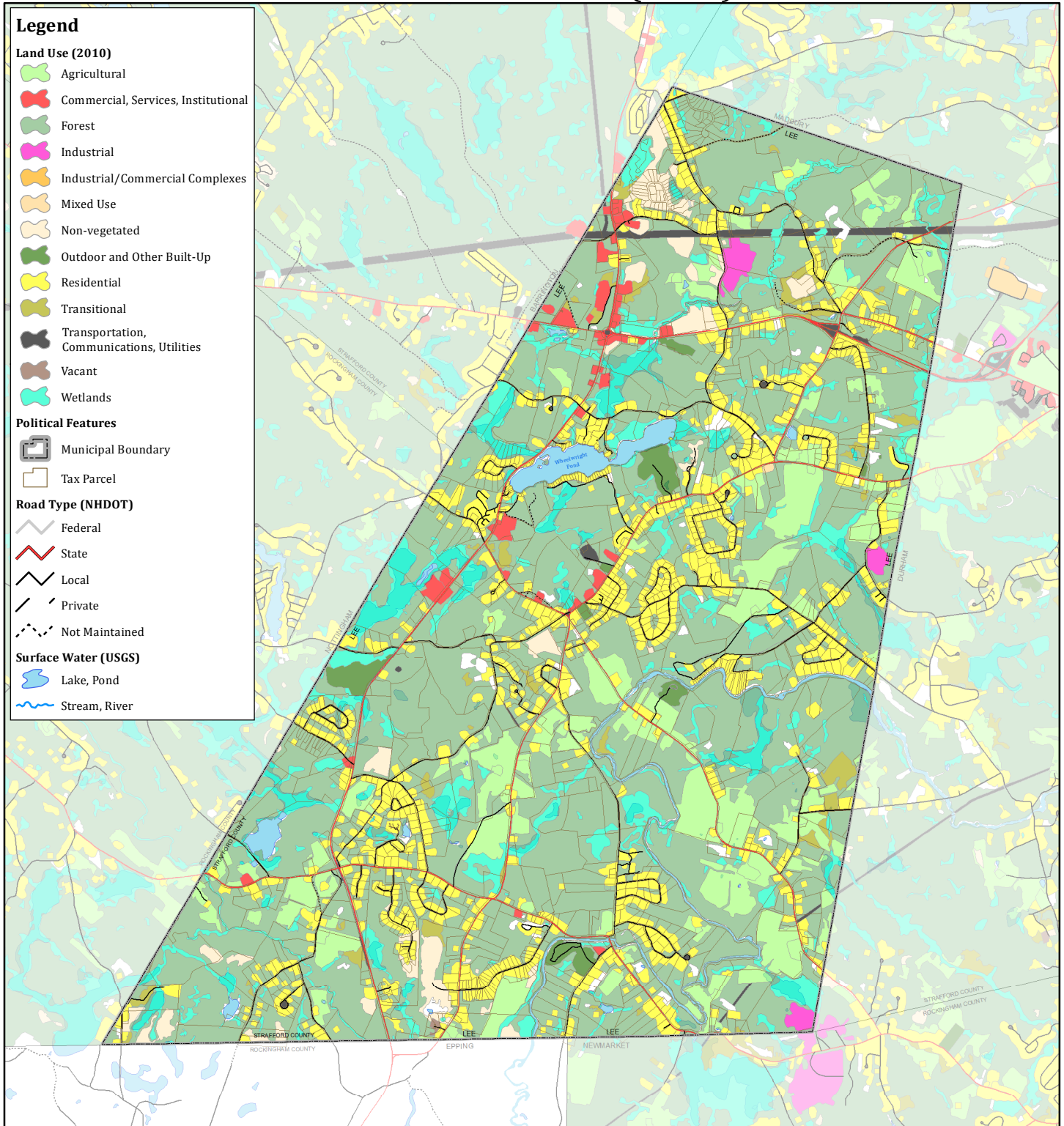
NH GRANIT

Map produced by
Strafford Regional Planning Commission
August 26, 2016

Strafford

REGIONAL PLANNING COMMISSION

Lee, NH: Land Use (2010)

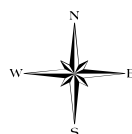


Map Feature Notes

The 13 categories of land use were originally derived from data from the 1998 USGS 1:12,000-scale Digital Orthophoto Quadrangles (DOQs), Road centerlines (NHDOT), USGS Digital Line Graphs (DLGs), surface water features from the Federal Emergency Management Agency (FEMA) Digital Flood Insurance Rate Maps (DFIRMs), wetlands data from the National Wetlands Inventory (NWI), and Landsat Thematic Mapper imagery were also considered.

1:58,556

0 0.25 0.5 1 Miles



Data Sources

Base features are from USGS 1:24,000 scale Digital Line Graphs, as archived in the GRANIT database. Digital data in NH GRANIT represent the efforts of the contributing agencies to record information from the cited source materials. Complex Systems Research Center (CSRC), under contract to the Office of Energy and Planning (OEP), and in consultation with cooperating agencies, maintains a continuing program to identify and correct errors in these data. Neither OEP nor CSRC make any claim as to the validity or reliability or to any implied uses of these data. Digital tax parcels taken from SRPC database. Data should be used for planning purposes only. Data was derived from various sources and were updated at different timeframes, with varying levels of accuracy. Street names are maintained internally by SRPC staff. Please notify SRPC of any missing or inaccurate street names.

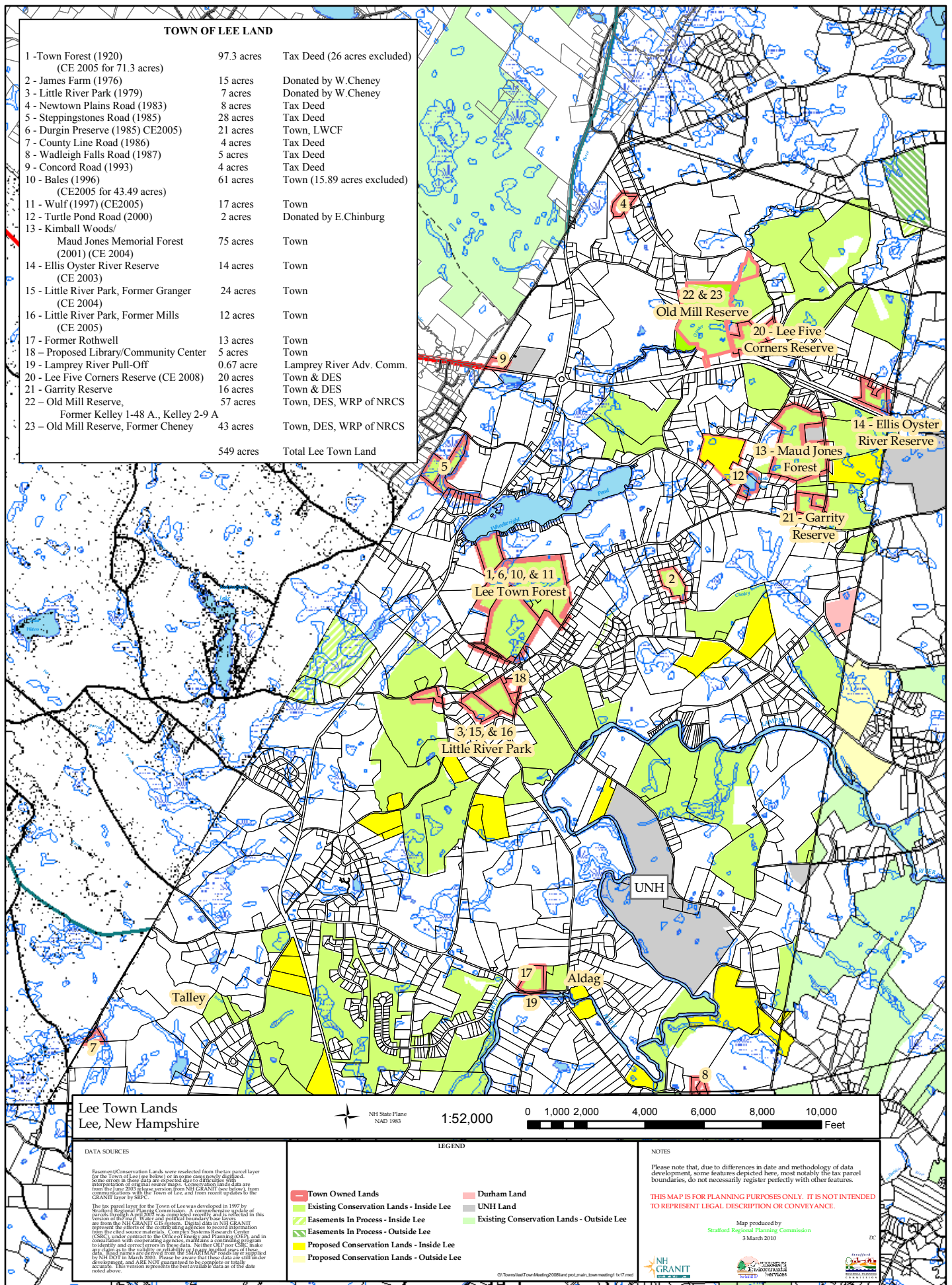
Prepared by the **Stafford Regional Planning Commission**
150 Wakefield St. Suite 12 Rochester, NH 03867
T: (603) 994-3500 E: srpc@stafford.org

Date: 7/13/2016 Author: RM
Path: G:\Requests\Members\Lee\PB_LandUse8.5x11.mxd



TOWN OF LEE LAND

1 - Town Forest (1920) (CE 2005 for 71.3 acres)	97.3 acres	Tax Deed (26 acres excluded)
2 - James Farm (1976)	15 acres	Donated by W.Cheney
3 - Little River Park (1979)	7 acres	Donated by W.Cheney
4 - Newtown Plains Road (1983)	8 acres	Tax Deed
5 - Steppingstones Road (1985)	28 acres	Tax Deed
6 - Durgin Preserve (1985) CE2005)	21 acres	Town, LWCF
7 - County Line Road (1986)	4 acres	Tax Deed
8 - Wadleigh Falls Road (1987)	5 acres	Tax Deed
9 - Concord Road (1993)	4 acres	Tax Deed
10 - Bales (1996) (CE2005 for 43.49 acres)	61 acres	Town (15.89 acres excluded)
11 - Wulf (1997) (CE2005)	17 acres	Town
12 - Turtle Pond Road (2000)	2 acres	Donated by E.Chinburg
13 - Kimball Woods/ Maud Jones Memorial Forest (2001) (CE 2004)	75 acres	Town
14 - Ellis Oyster River Reserve (CE 2003)	14 acres	Town
15 - Little River Park, Former Granger (CE 2004)	24 acres	Town
16 - Little River Park, Former Mills (CE 2005)	12 acres	Town
17 - Former Rothwell	13 acres	Town
18 - Proposed Library/Community Center	5 acres	Town
19 - Lamprey River Pull-Off	0.67 acre	Lamprey River Adv. Comm.
20 - Lee Five Corners Reserve (CE 2008)	20 acres	Town & DES
21 - Garrity Reserve	16 acres	Town & DES
22 - Old Mill Reserve, Former Kelley 1-48 A., Kelley 2-9 A	57 acres	Town, DES, WRP of NRCS
23 - Old Mill Reserve, Former Cheney	43 acres	Town, DES, WRP of NRCS
	549 acres	Total Lee Town Land



Lee Town Lands
Lee, New Hampshire



1:52,000

0 1,000 2,000 4,000 6,000 8,000 10,000 Feet

DATA SOURCES

Easements/Conservation Lands were resurveyed from the tax parcel layer for the Town of Lee (see below) or in some cases newly digitized. Some errors in these data are expected due to differences in the survey methods and original source maps. Conservation Lands data are from the June 2003 release version from NH GRANIT (see below), from communications with the Town of Lee, and from recent updates to the GRANIT layer by SRPC.

The tax parcel layer for the Town of Lee was developed in 1997 by the Lee Planning Commission. A computerized update of this version of the map, water and political boundary base layer, is from the NH GRANIT GIS system. Digital data in NH GRANIT represent the efforts of the contributing agencies to record information from the cited source materials. Computer Systems Research Center, Inc. has been contracted to provide a continuing program of data quality and error correction. Neither GRANIT nor SRPC make any claim as to the validity or reliability of the data, and the user assumes all responsibility for the use of the data. The user is advised that the data are not guaranteed to be complete or totally accurate. This version represents the best available data as of the date noted above.

LEGEND

- Town Owned Lands
- Existing Conservation Lands - Inside Lee
- Easements In Process - Inside Lee
- Easements In Process - Outside Lee
- Proposed Conservation Lands - Inside Lee
- Proposed Conservation Lands - Outside Lee
- Durham Land
- UNH Land
- Existing Conservation Lands - Outside Lee

NOTES

Please note that, due to differences in date and methodology of data development, some features depicted here, most notably the tax parcel boundaries, do not necessarily register perfectly with other features.

THIS MAP IS FOR PLANNING PURPOSES ONLY. IT IS NOT INTENDED TO REPRESENT LEGAL DESCRIPTION OR CONVEYANCE.

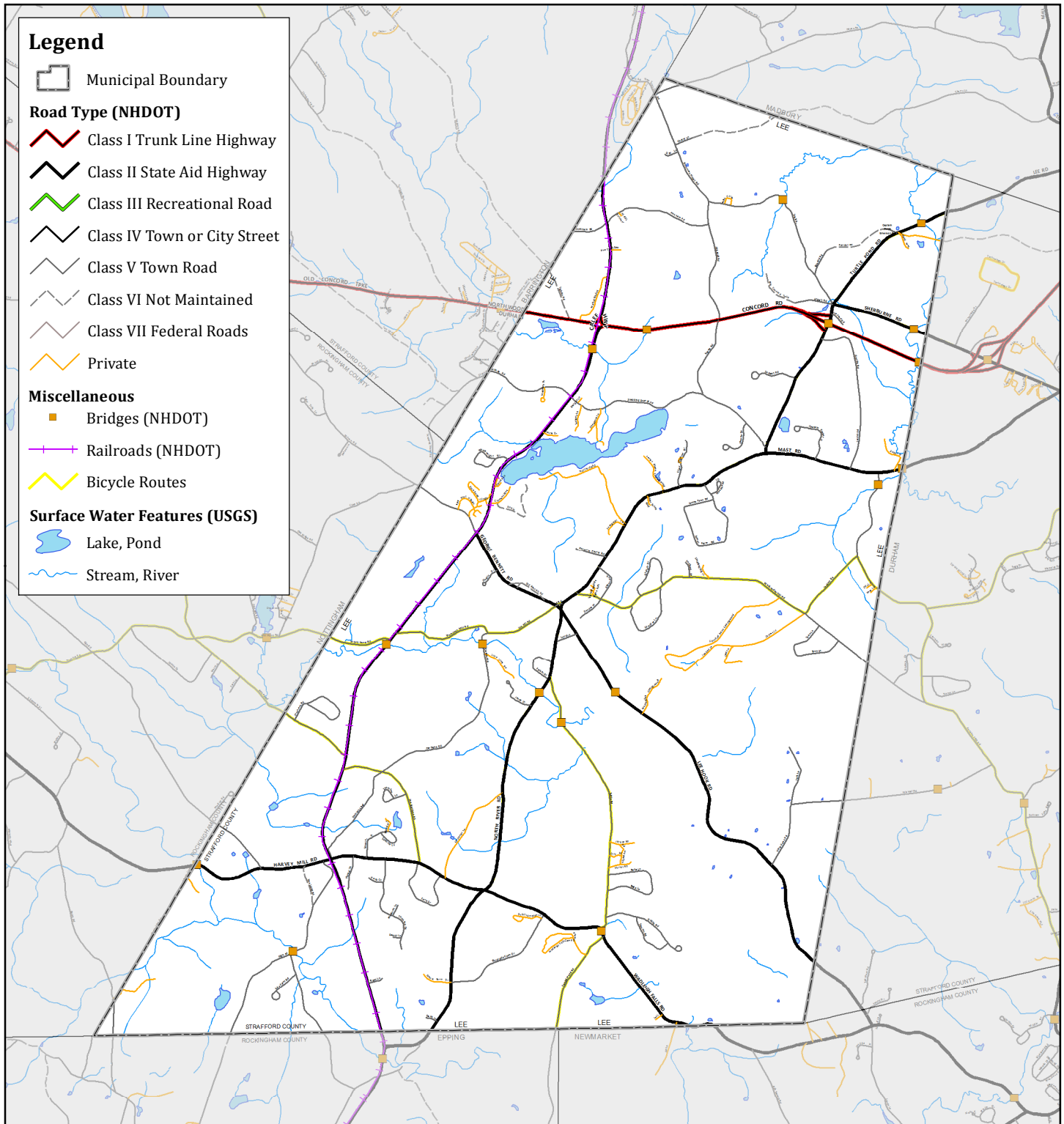
Map produced by
Stratford Regional Planning Commission
3 March 2010



DC

G:\Town\Lee\TownMeeting2008\land\main_townmeeting1.txd

Lee, NH: Transportation



Map Feature Notes

Legislative classification allows the state of New Hampshire to delineate roadways as Primary Highways owned and maintained by the state (Class I), State-Aid Secondary Highways (Class IIa), Secondary Highways owned and maintained by municipalities (Class IIb), Recreational Roads (Class III), Roads in Urban Compact Areas (Class IV), Local Roads (Class V), non-maintained Local Roads (Class VI), and Federal Roads (Class VII). (NHDOT, *Roadway Data Inventory Manual*, 2014)

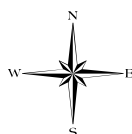
Prepared by the **Strafford Regional Planning Commission**
 150 Wakefield St. Suite 12 Rochester, NH 03867
 T: (603) 994-3500 E: srpc@straftord.org

Date: 7/13/2016 Author: RM
 Path: G:\Requests\Members\Lee\PB_Transportation8.5x11.mxd



1:58,556

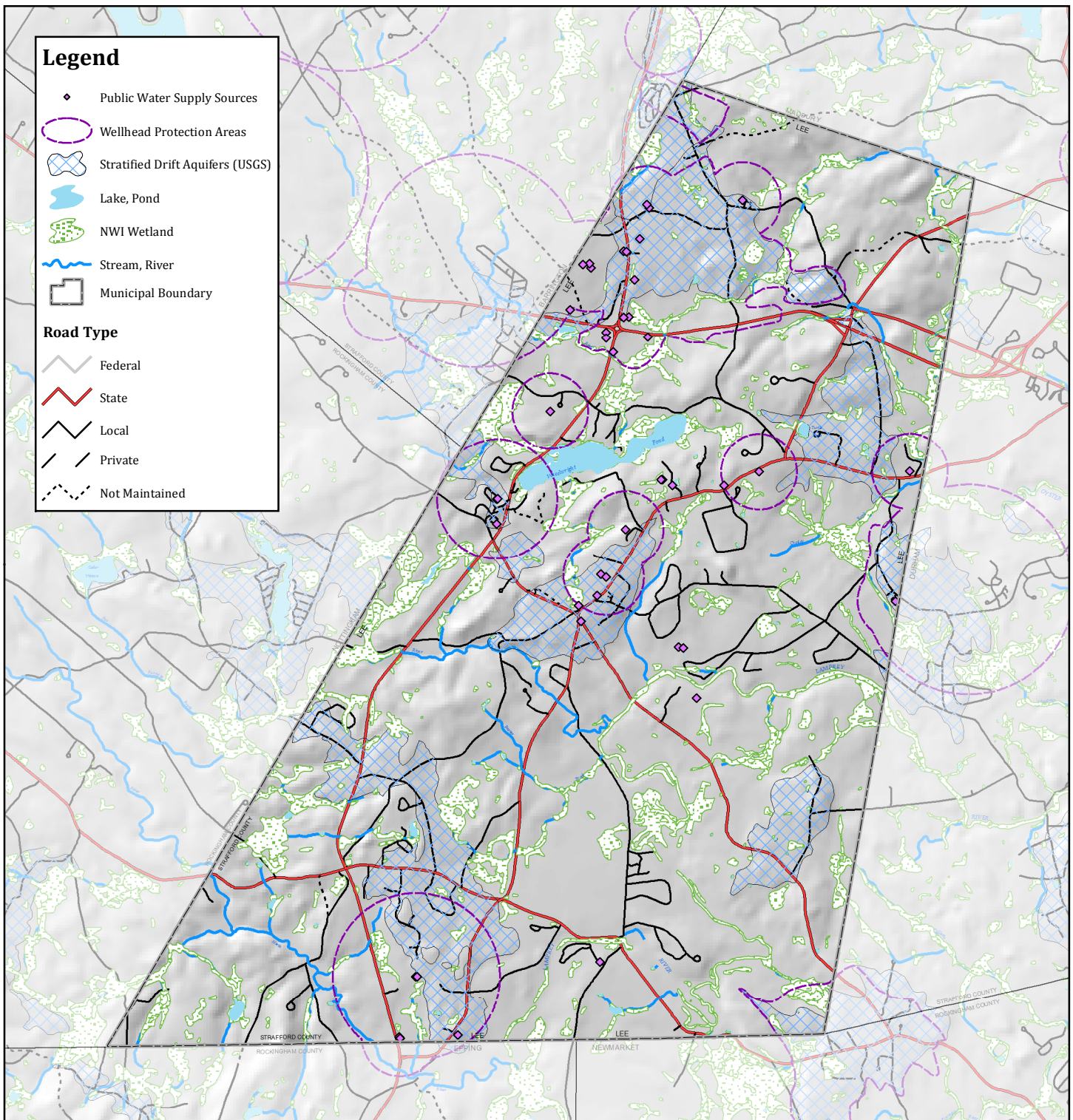
0 0.25 0.5 1 Miles



Data Sources

Base features are from USGS 1:24,000 scale Digital Line Graphs, as archived in the GRANIT database. Digital data in NH GRANIT represent the efforts of the contributing agencies to record information from the cited source materials. Complex Systems Research Center (CSRC), under contract to the Office of Energy and Planning (OEP), and in consultation with cooperating agencies, maintains a continuing program to identify and correct errors in these data. Neither OEP nor CSRC make any claim as to the validity or reliability or to any implied uses of these data. Digital tax parcels taken from SRPC database. Data should be used for planning purposes only. Data was derived from various sources and were updated at different timeframes, with varying levels of accuracy. Street names are maintained internally by SRPC staff. Please notify SRPC of any missing or inaccurate street names.

Lee, NH: Surface Water, Wetlands, and Protection Areas



Map Feature Notes:

Wellhead Protection Areas (WPAs) indicate the extent of the area in which surface and subsurface water flows toward and reaches a public water source. These areas are delineated and regulated by NHDES under the wellhead protection program (RSA 485-C). All public water supply sources indicated are groundwater sources.

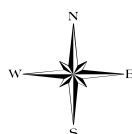
Prepared by the **Strafford Regional Planning Commission**
150 Wakefield St. Suite 12 Rochester, NH 03867
T: (603) 994-3500 E: srpc@strafford.org

Date: 7/13/2016 Author: RM
Path: G:\Requests\Members\Lee\PB_WaterResources8.5x11.mxd



1:58,556

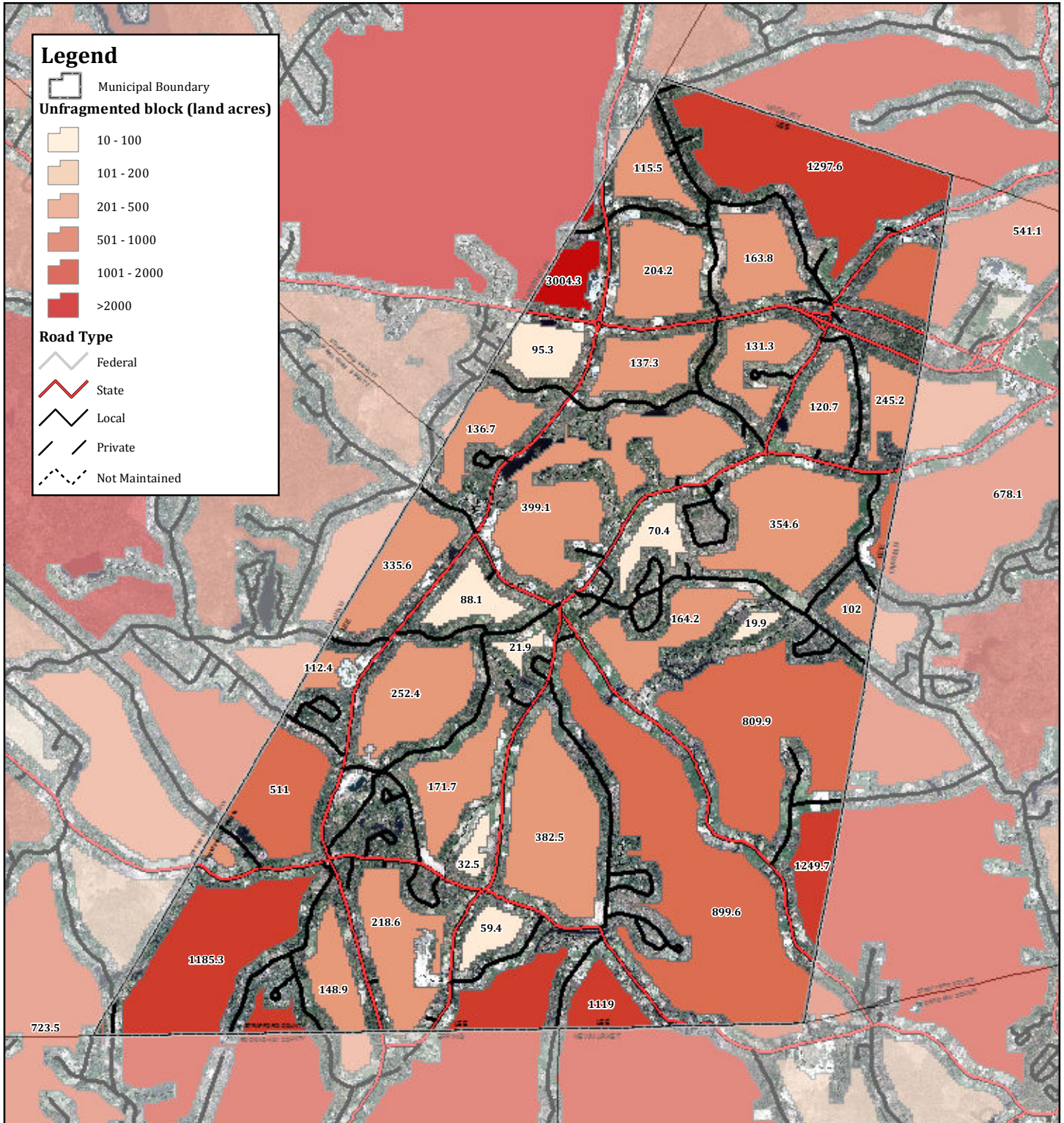
0 0.25 0.5 1 Miles



Data Sources

Base features are from USGS 1:24,000 scale Digital Line Graphs, as archived in the GRANIT database. Digital data in NH GRANIT represent the efforts of the contributing agencies to record information from the cited source materials. Complex Systems Research Center (CSRC), under contract to the Office of Energy and Planning (OEP), and in consultation with cooperating agencies, maintains a continuing program to identify and correct errors in these data. Neither OEP nor CSRC make any claim as to the validity or reliability or to any implied uses of these data. Digital tax parcels taken from SRPC database. Data should be used for planning purposes only. Data was derived from various sources and were updated at different timeframes, with varying levels of accuracy. Street names are maintained internally by SRPC staff. Please notify SRPC of any missing or inaccurate street names.

Lee, NH: Wildlife Corridors



Map Feature Notes:

Unfragmented blocks of habitat are large pieces of land which are not bisected by a maintained road, business or other human habitation. These areas can include forests, meadows, open water, wetlands, and agricultural fields. Unfragmented blocks of land sustain diverse communities of plant and animal species, provide recreational opportunities for the community and often provide or protect important scenic resources.

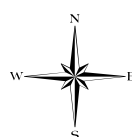
Prepared by the **Strafford Regional Planning Commission**
 150 Wakefield St. Suite 12 Rochester, NH 03867
 T: (603) 994-3500 E: srpc@straftord.org

Date: 7/12/2016 Author: RM
 Path: G:\Requests\Members\Lee\PB_WildlifeCorridor8.5x11.mxd



1:58,556

0 0.25 0.5 1 Miles



Data Sources





Base features are from USGS 1:24,000 scale Digital Line Graphs, as archived in the GRANIT database. Digital data in NH GRANIT represent the efforts of the contributing agencies to record information from the cited source materials. Complex Systems Research Center (CSRC), under contract to the Office of Energy and Planning (OEP), and in consultation with cooperating agencies, maintains a continuing program to identify and correct errors in these data. Neither OEP nor CSRC make any claim as to the validity or reliability or to any implied uses of these data. Digital tax parcels taken from SRPC database. Data should be used for planning purposes only. Data was derived from various sources and were updated at different timeframes, with varying levels of accuracy. Street names are maintained internally by SRPC staff. Please notify SRPC of any missing or inaccurate street names.

Town of Lee
New Hampshire



DRAFT

Zoning Overlay
Districts (2013)

Legend

-  Shoreland Conservation District
-  Aquifer Conservation District
-  Light Commercial Zone
-  Wet Soils Conservation Zone
-  Commercial Zone
-  Residential Zone

Surface Water Features

-  Lakes, Ponds, Rivers
-  Rivers, Streams, Brooks






Political Features

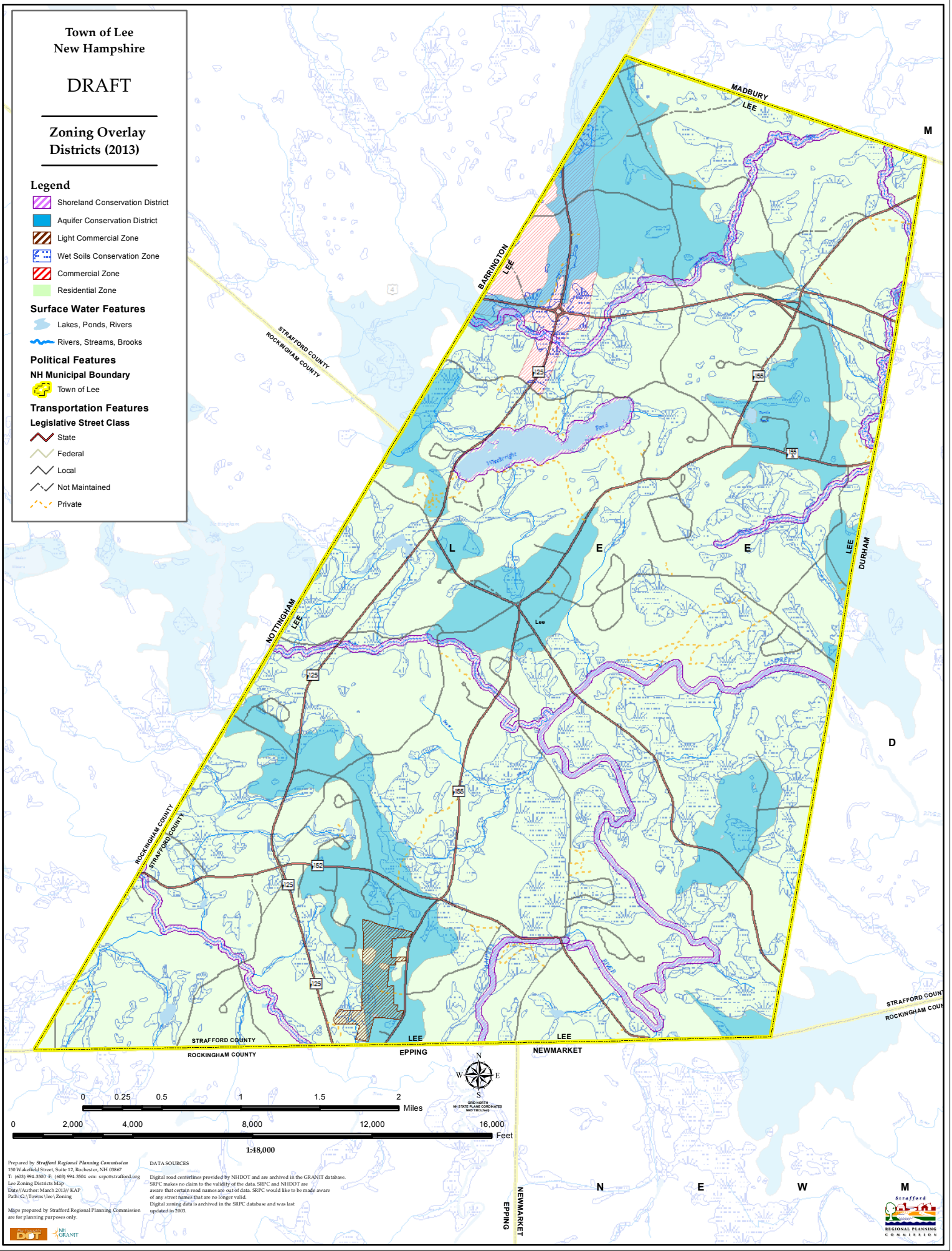
NH Municipal Boundary

-  Town of Lee

Transportation Features

Legislative Street Class

-  State
-  Federal
-  Local
-  Not Maintained
-  Private



Prepared by: Strafford Regional Planning Commission
150 Wakefield Street, Suite 12, Rochester, NH 03867
T: (603) 994-3500 F: (603) 994-3504 ext: srpc@strafford.org
Lee Zoning Districts Map
Date/Author: March 2013/ KAP
Path: C:\Towns\Lee\Zoning
Maps prepared by Strafford Regional Planning Commission
are for planning purposes only.

DATA SOURCES

Digital road centerlines provided by NHDOT and are archived in the GRANIT database.
SRPC makes no claim to the validity of the data. SRPC and NHDOT are aware that certain road names are out of date. SRPC would like to be made aware of any street names that are no longer valid.
Digital zoning data is archived in the SRPC database and was last updated in 2003.

