

Barrington Town Offices

4 Signature Drive
Barrington, NH



About Barrington **Town Offices Project**

- **2020 Population: 9,326**
(2020 Lee Population: 4,524)
- **Project Date: 2021-2022**
- **Lot Size: 6 Acres +/- (Donated)**
- **Construction: Careno Const.,
Portsmouth, NH**
- **Building Size: 9,444SF+/-**
- **Cost: \$1.9 Million +/-**
- **Funding: \$1.5 Million**
Community Grant, \$125,00
FEMA Grant, Balance from
Capital Reserve Fund and
Unassigned Fund Balance



Site Details

- **Site: 6 Acres +/-**
- **Parking Area: 14,000 Sq.Ft., 35 Spaces, 2 Handicap Spaces**
- **Building : 9,444 +/-Sq.Ft.**
- **Building: 139'x60'**
- **Slab on Grade**
- **Drilled Well**
- **Septic**
- **Underground Utilities**
- **LED Exterior Lighting**



Building Details:

- **Total Area : 9,444 +/- Sq.Ft.**
- **Net Area: 7,615 +/-Sq, Ft.**
- **Roof: Architectural Asphalt Shingles**
- **Exterior Siding : Composite**
- **Exterior Trim : Composite**
- **Walls: Insulated Concrete Forms (ICF)**
- **Secured Lobby**
- **Secured Corridor**

Barrington Town Offices: Floor Plan and Interior



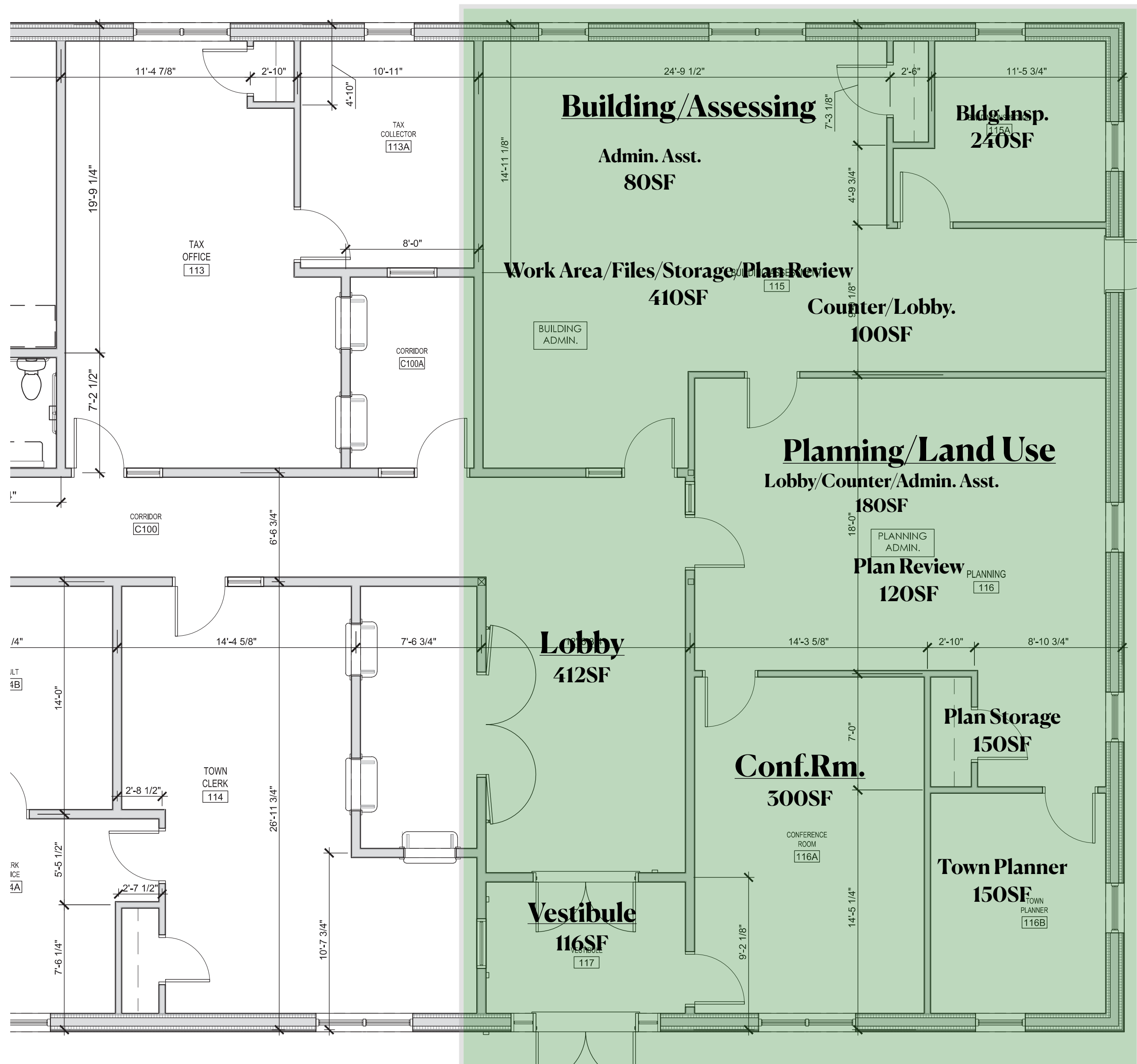
Barrington Town Offices: Floor Plan and Interior



General Construction Interior Details

- **Net Area: 7,615 +/-Sq.Ft.**
- **Large Meeting Room:
1,025+/- Sq. Ft.**
- **Adjusted Sq.Ft.:
6,590+/- Sq.Ft.**
- **Ceiling Height: 10 Ft.**
- **Secured Lobby**
- **Secured Corridor**
- **Lobby Mural:
Stonehouse Pond
(Painted and Donated by
Barrington Artist)**

Barrington Town Offices Floor Plan: South Cross Section (Enlarged)



Enlarged Inset Entrance/Lobby/Planning/ Assessing Details

- **Vestibule @116 Sq.Ft.**
- **Lobby @412 Sq. Ft.**
- **Building Assessment @397 Sq.Ft.**
- **Building Inspector @153 Sq.Ft.**
- **Planning Admin. @550 Sq.Ft.**
- **Town Planner @171 Sq.Ft.**
- **South Conference Room @412 Sq. Ft.**

Barrington Town Offices Floor Plan: South Cross Section Offices/Details



Building Assessing Work Station/Office



Building/Assessing Select Details

- **Bldg. Insp. Office
240Sq.Ft.**
- **Admin.Asst. 80Sq.Ft.**
- **Counter/Lobby 100Sq.Ft.**
- **Work Area 160Sq.Ft.**
- **Files/Storage 150Sq.Ft.**
- **Plan Review 100Sq.Ft.**

Building Assessing Work Area/File Storage



South Conference/Meeting Room



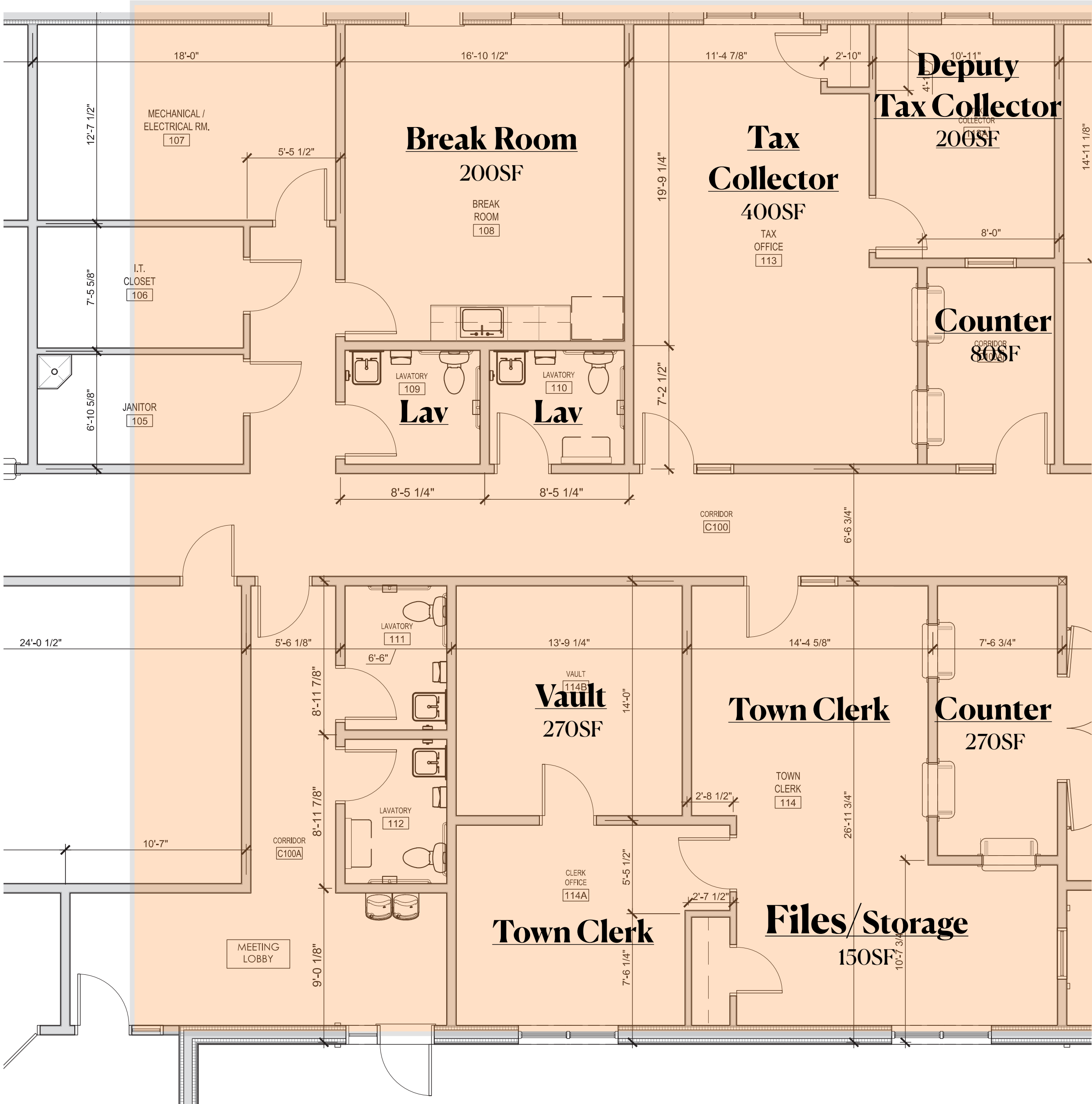
South Conference Room



South Conference Room Select Details

- **300 Sq.Ft.**
- **One of Two Conference Rooms**
- **TV Monitor**
- **Two Entrances**
- **Secured Lobby**
- **Secured Corridor**

Barrington Town Offices Floor Plan: Central Cross Section(Enlarged)



Enlarged Inset Entrance/Lobby/Planning/ Assessing Details

- **Town Clerk Lobby @116 Sq.Ft.**
- **Town Clerk Counter 270 Sq.Ft.**
- **Town Clerk Office@412 Sq. Ft.**
- **Town Clerk Office 150 Sq.Ft.**
- **Vault 270Sq.Ft.**
- **Tax Collector Lobby 80Sq.Ft.**
- **Tax Collector Service Area @153 Sq.Ft.**
- **Tax Collector Office 260 Sq.Ft.**
- **Break Room 200Sq.Ft.**
- **Mechanical/Data 5 00 Sq. Ft.**
- **Lavatories**

Barrington Town Offices Floor Plan: Central Cross Section Offices/Details



Town Clerk's Office Entrance from Main Lobby

Town Clerk's Office: Windows/ Counters



Town Clerk Select Details

- Counters 270 Sq.Ft.
- Office 150 Sq.Ft.
- Files/Storage 150 Sq.Ft.
- Vault 270 Sq.Ft.
- Private Meeting/Conf. 100 Sq.Ft.
- Secured Lobby
- Secured Corridor

Tax Collector's Office: Counters/Window



Tax Collector Select Details

- **Tax Collector Office**
160 Sq.Ft.
- **Deputy Tax Collector**
Office 100 Sq.Ft.
- **Counter/Lobby**
80 Sq.Ft.
- **Files/Storage 60 Sq.Ft.**
- **Secured Lobby**
- **Secured Corridor**

Common Areas and General Facilities: Break Room(200 Sq.Ft.)



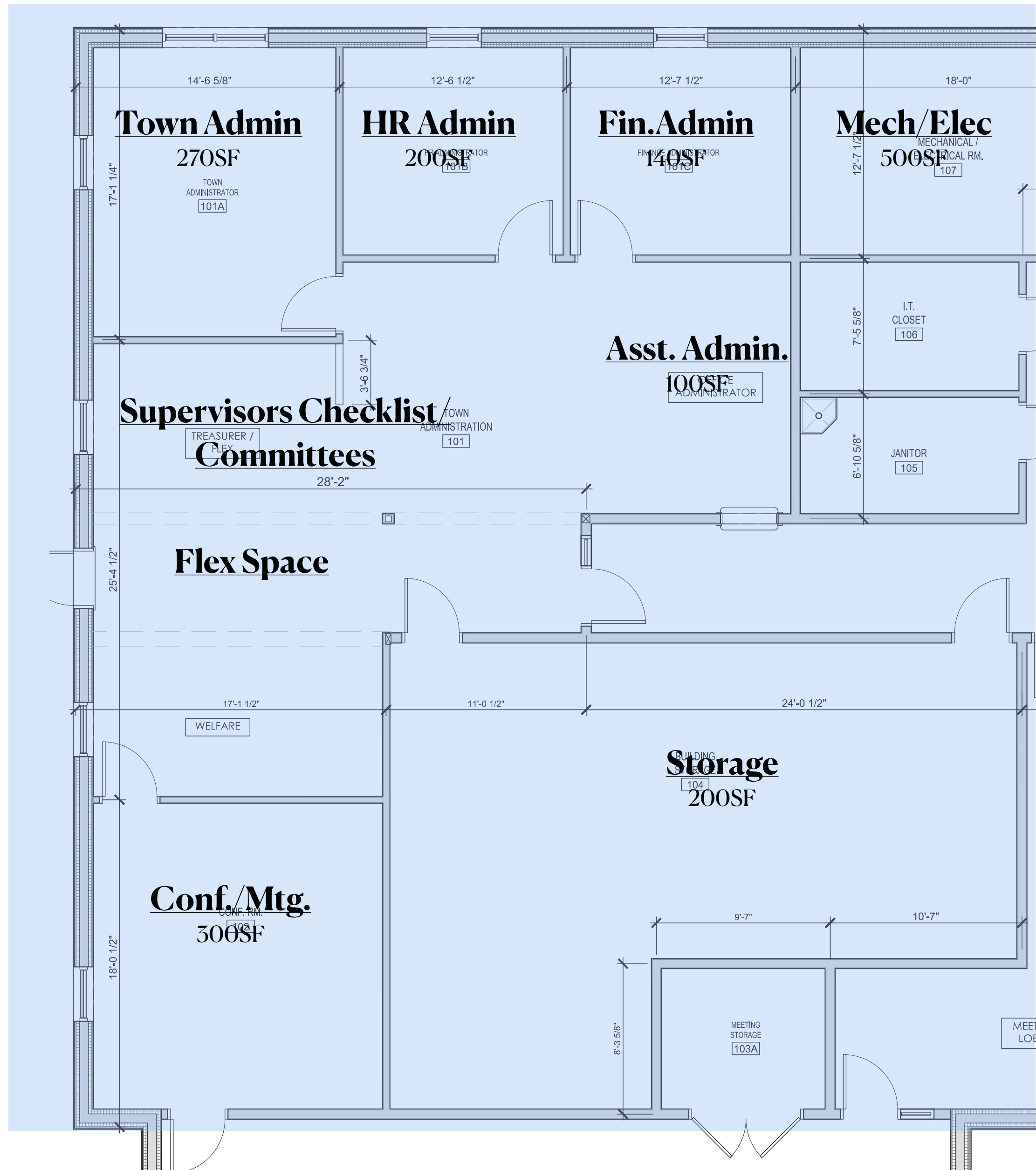
Building Main Corridor: (Security Cameras Throughout)



Common Areas and General Facilities: Lavatories



Barrington Town Offices Floor Plan: North Cross Section(Enlarged)



Enlarged Inset Administration/Select Board Details

- **Town Administrator 270Sq.Ft.**
- **Welfare 200Sq.Ft.**
- **Finance Director 140Sq. Ft.**
- **Finance Officer 100 Sq.Ft.**
- **Files/Copy/Storage 130Sq.Ft.**
- **Administrative Assistant 100 Sq.Ft.**
- **Select Board Files/Storage 130Sq.Ft.**
- **Supervisors Checklist/Committee Work Stations 200+/-Sq.Ft.**
- **Common/Flex Work Area**
- **General Storage 200Sq.Ft.**
- **Select Board Conference Room 300Sq.Ft.**

Assistant Town Administrator: Work Area, Counter and Service Window



Conner MacIver

**TOWN
ADMINISTRATOR**

193

193

Town Administrator's Office (270Sq.Ft.)



Town Administrator's Office



**FINANCE
ADMINISTRATOR**

191

2011-2012

Finance Administrator's Office(140Sq.Ft.)



Supervisors of the Checklist and Committee Work Stations



Select Board/Committee Common Area Select Details

- Supervisors Checklist/
Committee Work Area
- Two Desks/Work Stations
- File Cabinet Storage
- Secured Entrance

Flex Space /Committee Work Area



North Conference/Meeting Room

**NORTH
CONFERENCE**

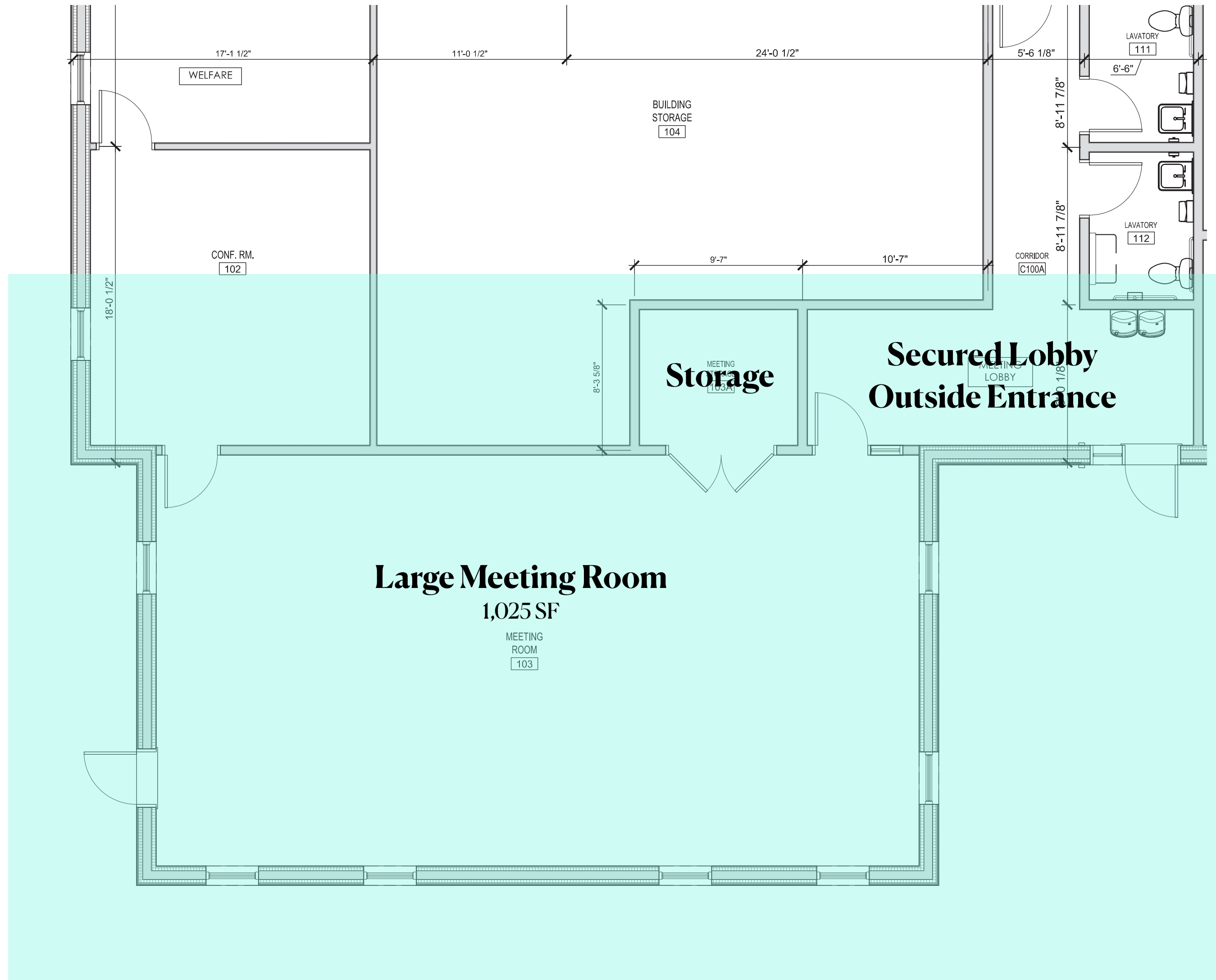
Braille text

171

North Conference/Meeting Room(300 Sq.Ft.)



Barrington Town Offices Floor Plan: Large Meeting Room (Enlarged)



Enlarged Inset Large Meeting Room Details

- **Meeting Room: 24'x46'**
- **Media: 2 Remote Cameras**
- **Media: 2 Large TV Monitors**
- **Secured Exterior Entrance**
- **Lobby and Lavatories**

MEETING ROOM
MEETING ROOM
170

Meeting Room
Select Board
Planning Board
Zoning Board



Select Board/Large Meeting Room(1,025 Sq.Ft.)



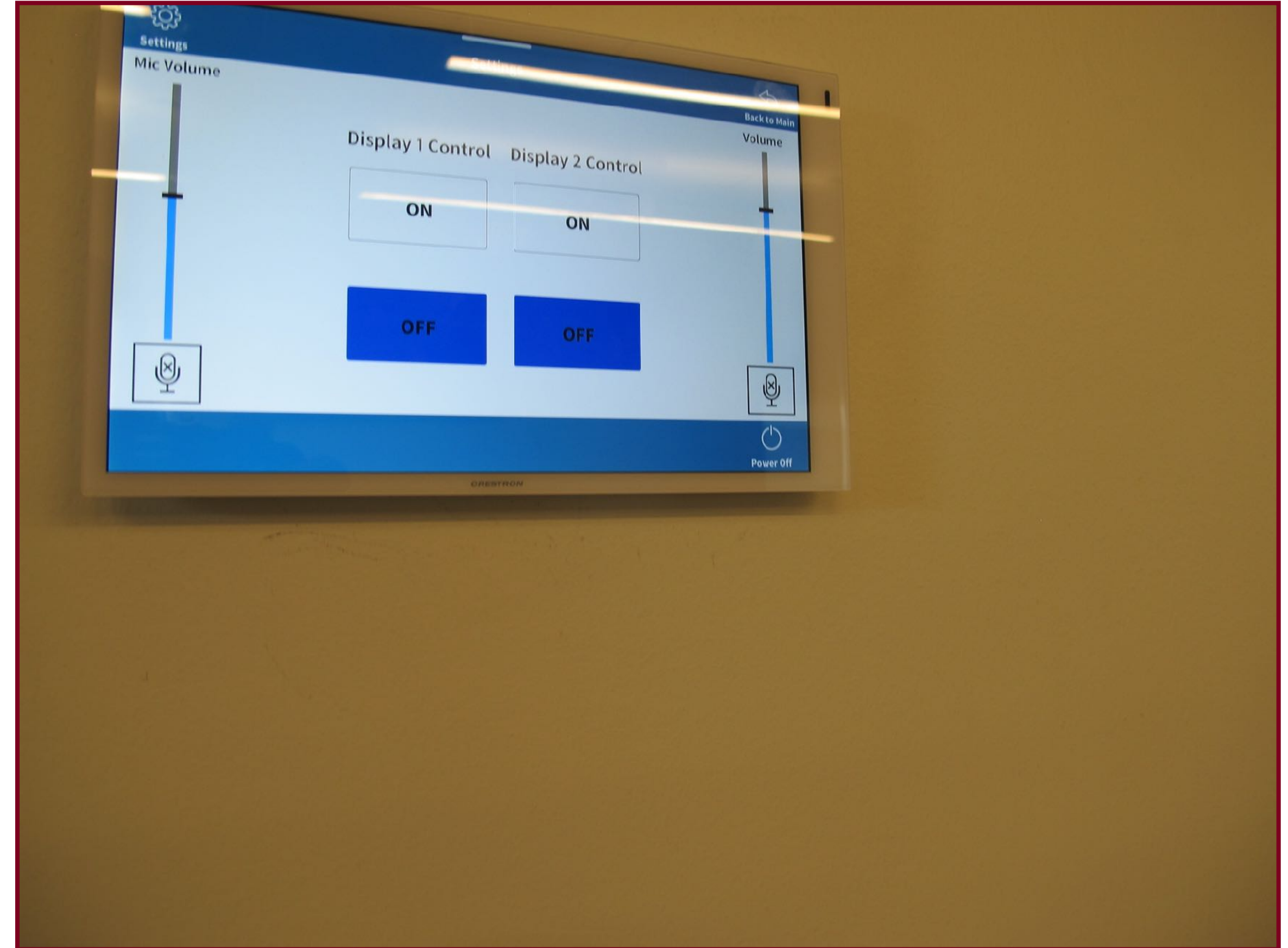
Select Board/Large Meeting Room(For Meetings/Community Events)



Select Board/Large Meeting Room



Select Board/Large Meeting Room: Media Fixtures



Exterior Features, Security and Mechanicals



Exterior Features, Security and Mechanicals



Security/Mechanicals/ Exterior Features Select Details

- **7 Exterior Entrances**
- **Keyless Secure Entries**
- **Security Alarm System**
- **HVAC: Heat Pumps**
- **LED Exterior Lighting**
- **Security Cameras**

Southeast Perspective: 35 Parking Spaces



Exterior Features, Security and Mechanicals



Exterior Features Select Details

- **Composite Siding**
- **Composite Trim**
- **LED Lighting**

Barrington Town Offices: Dedicated October 27, 2022



Barrington Town Offices: Dedicated October 27, 2022





BARRINGTON
TOWN OFFICES



